



PACIFIC IMPERIAL
MINES INC.

CORPORATE PRESENTATION

Pacific Imperial Mines

Focused on Potential **Gold, Silver, and Copper**
in British Columbia and Saskatchewan

TSXV: **PPM**

ACQUIRE → EXPLORE → DISCOVER → EVALUATE → DEVELOP

March 2026

Forward Looking Information & Disclosures

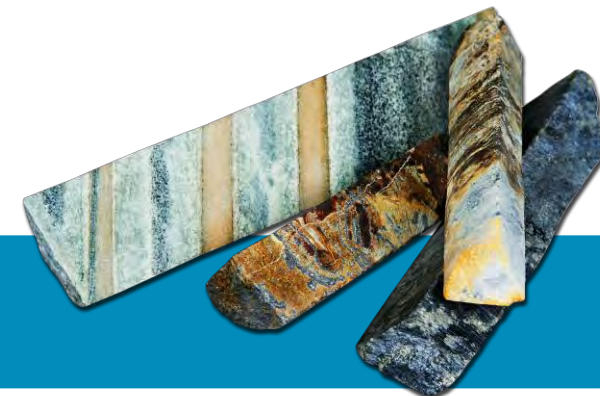
Some statements in this presentation contain forward looking information. These statements address future events and conditions and, as such, involve inherent risk and uncertainties. Actual results could be significantly different from those projected. Risks and uncertainties of the Company's business are discussed in the Management Discussion and Analysis of the Company's Annual and Quarterly Reports, available both on the Company's website at www.pacificimperialmines.com and at www.SEDAR.com.

A number of mineral resources or significant occurrences disclosed herein relate to nearby properties owned by other companies, and the data presented have been extracted from these companies' press releases and websites. A Qualified Person has been unable to verify this information from the adjacent properties, and such results are not necessarily indicative of potential quantities or grades of mineralization on the Company's properties.

Peter Holbek, P.Geo., Director for Pacific Imperial Mines is the Qualified Person for this document for the purposes of National Instrument 43-101, prepared or supervised the preparation of the technical information contained herein. Please do your own due diligence.



Investment Upside



New Approach, Management/Directors

New Directors/Management with a strong technical team and capital market access.
A clear plan to create shareholder value.



Proven Districts with Geologic Potential

Two properties were drilled with prospective results. The third property is directly adjacent to two mines and surrounded by staked ground with active drilling and exploration.



Projects Easily Accessible

Two of the three properties are road-accessible, and the third is winter-accessible by road.



Money in the Ground!

Successful exploration is driven by drilling and geophysical surveys not corporate overheads. PPM Directors, CEO and President do not draw a salary and are aligned with shareholders' interests in delivering results to drive stock appreciation.

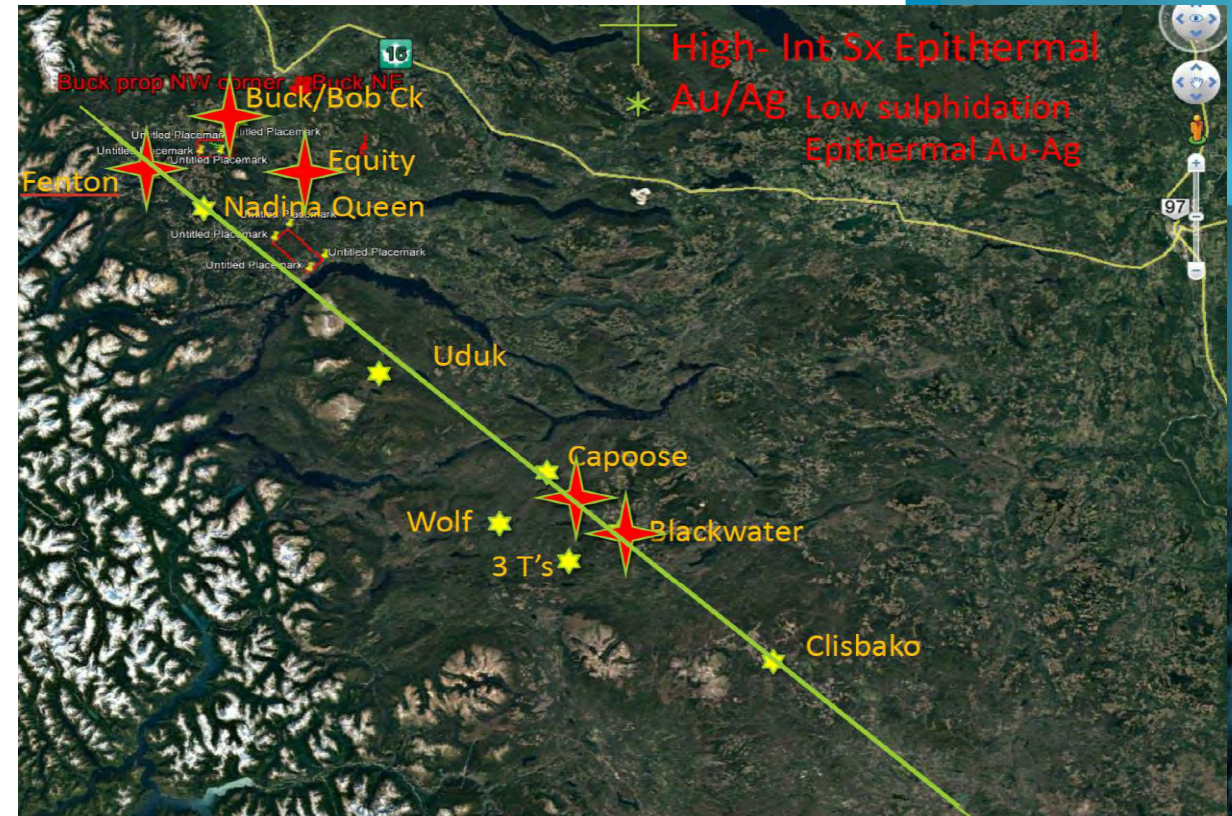


Not Just Money, but Smart Money

While funding is crucial, successful exploration requires “doing the right things”, with the company’s strong technical team, the application of scientific knowledge and proper targeting drives successful exploration

100%* Owned Fenton Gold/Silver Project B.C.

- Excellent location, 30km south of Houston, BC, 2 lane all weather road and 6km from Huckleberry 154KV power line.
- Intermediate sulphidation Au-Ag (Zn,Pb,Cu) deposit associated with felsic volcanism.
- Large alteration system similar to Artimis Gold's Blackwater mine
- Two drill programs (14 holes) confirms alteration and mineralization similar to Blackwater. Fenton mineralization appears to be higher in the hydrothermal system, Blackwater is at a deeper erosion level.
- Both bulk tonnage open pit and potential high-grade underground targets



*Subject to meeting cash and exploration commitments and a 2.5 % NSR

Artemis Gold's Blackwater/Fenton Similarities

General Deposit Characteristics

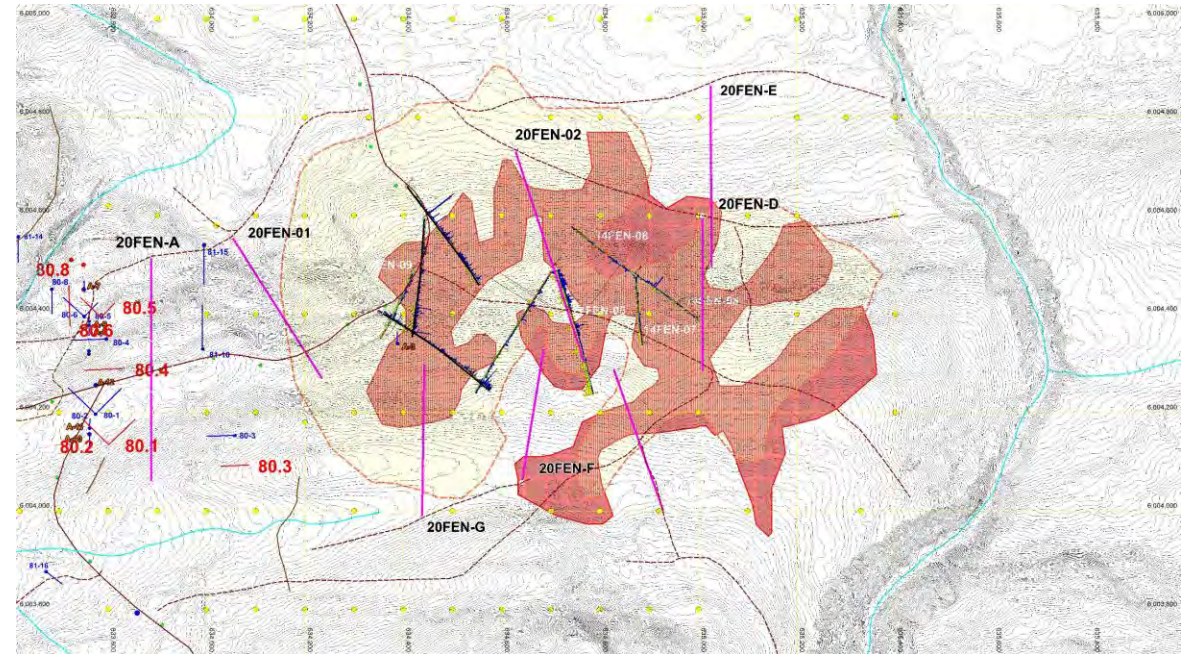
- BC hosts high to low sulphidation systems – Blackwater deposit
- Only recognized recently, no "physical" deposit models
- Large alteration zones (many sq. km in area) with limited exposure
- Scattered zones of low-grade style mineralization are distributed within the larger alteration zone, with later, low sulphidation high-grade Au silica veins/fracture fill contributing to grade
- Areas of high Ag/Au may occur peripheral to higher Au zones
- Zn, Pb and possibly Cu may contribute to economics but are variable within and between deposits
- Extensive drilling is require to define the resources and reserves.



Artemis Gold's Blackwater/Fenton Similarities

Fenton Property

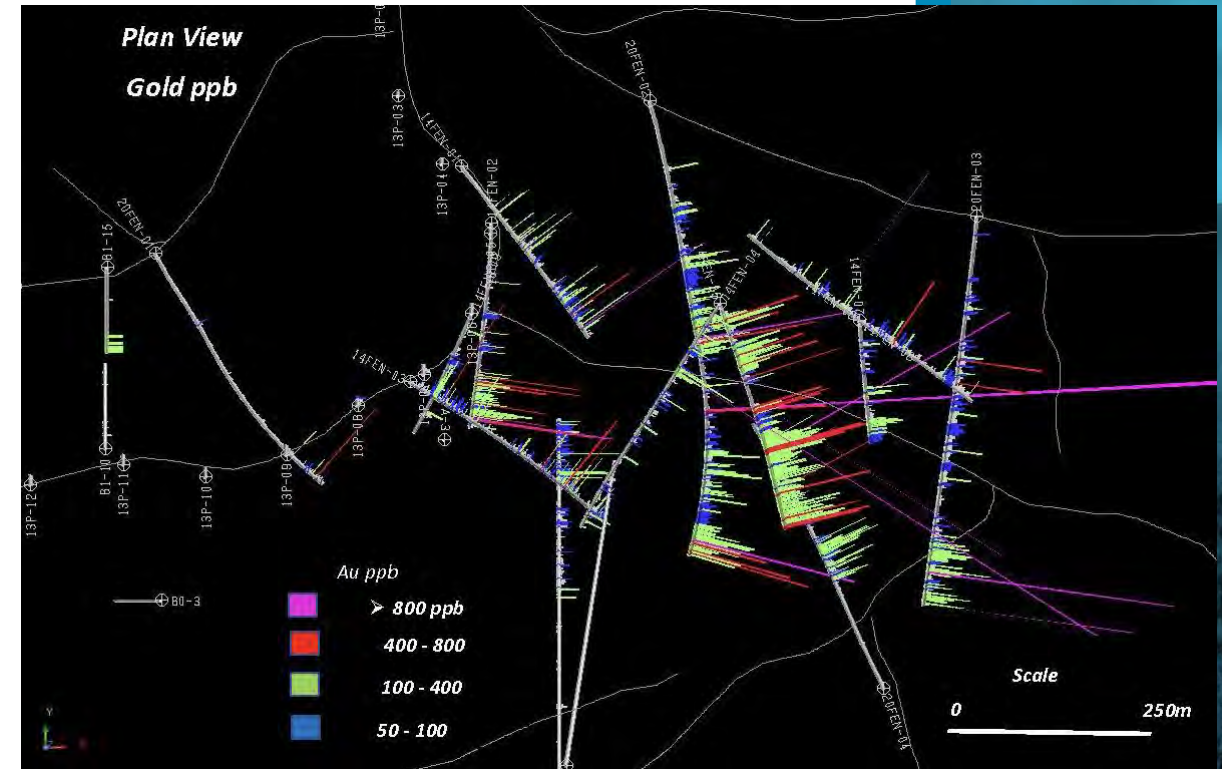
- Fenton projects hosts a large, high sulphidation alteration zone (>2.6kmx1.5km), mineralized zone size is currently unknown
- Fenton drilling at early stage
- Rock age, mineralization and alteration very similar to Blackwater
- Strong geochemical signature and large chargeability anomaly similar to Blackwater
- Blackwater has drilled more than 1000 drill holes to date.
– significant drilling is required to define the resource and reserves
- ARTEMIS' Blackwater project is currently valued at ~ \$10B.
- Risk is worth the reward !!



The overlay is a projection of BW alteration zone (yellow) and ore-zone (red) over Fenton drill hole location at same scale

100%* Owned Fenton Gold/Silver Project B.C.

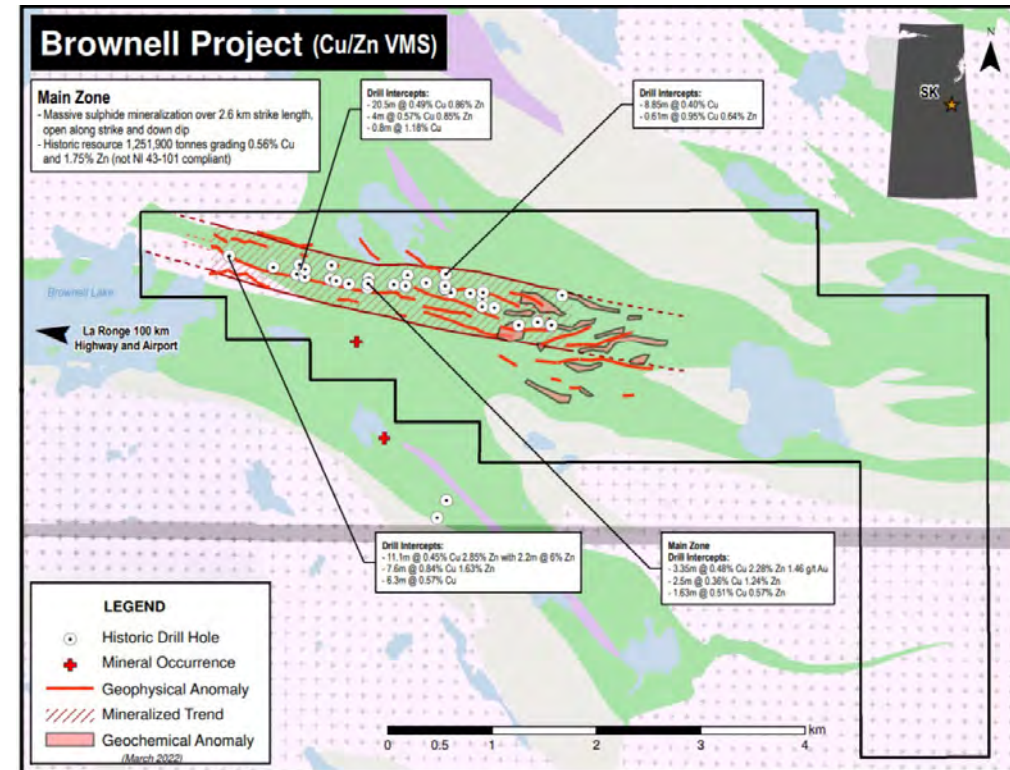
| FENTON DRILL HOLE DATA | | | | | | |
|---|----------|--------|---------------|-------------|------------|--------|
| Drill Hole | From (m) | To (m) | Thickness (m) | Au (g/t) | Ag (g/t) | Zn (%) |
| 20FEN-02 | 398.4 | 447.1 | 48.7 | 0.31 | 11.2 | 0.34 |
| | 558 | 564 | 6 | 6.15 | 4.5 | 0.25 |
| | 615 | 825 | 210 | 0.16 | 21 | 0.25 |
| Including 20FEN-03 | 765 | 825 | 60 | 0.31 | 14.9 | 0.39 |
| 20FEN-04 | 563 | 626 | 63 | 0.22 | 2.8 | |
| Including | 20 | 179 | 159 | | | 0.33 |
| | 20 | 75 | 55 | | | 0.54 |
| | 313 | 434 | 121 | 0.15 | | |
| | 791 | 833 | 42 | | | 0.29 |
| | 24 | 91.9 | 67.9 | | | 0.27 |
| Blackwater M&I Resource Average @ 0.20 | | | | 0.61 | 6.5 | |
| M&I resource 12.4 million ounces AuEq | | | | | | |



*Subject to meeting cash and exploration commitments and a 2.5 % NSR
 All drilling is inclined between -45° and -55°

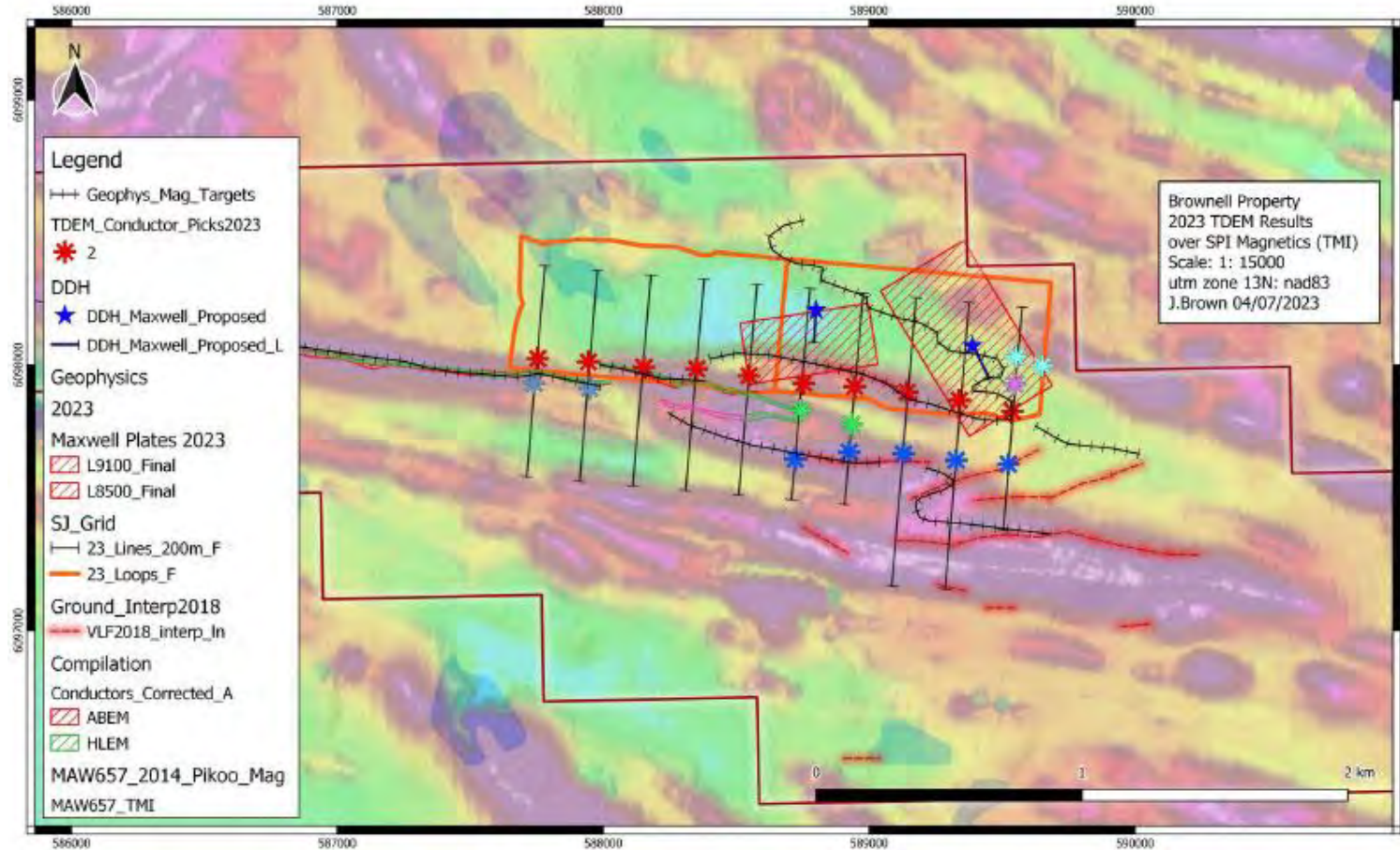
60%* Owned Brownell Property - Saskatchewan

- Option to earn 60% from Eagle Plains Resources
- Volcanogenic Massive Sulphide Prospect in Saskatchewan. ~75km west of Flin-Flon District.
- Greenstone terrane explored in the mid 60's to 70's
- VMS horizon tested along a 2.3km strike length with relatively shallow drilling, but drill intersection grades were either low grade or narrow. However, confirms a VMS-type geological setting with a small historical resource.
- Ground-based HLEM deep penetration survey recently completed and indicates strong conductor(s) to the east and deeper (300m), possibly related to plunging fold noses.
- Saskatchewan Government grant provides 25% of drill costs (to a maximum of \$150K/year).



New conductors projected to surface, plunging to the east

60%* Owned Brownell Property - Saskatchewan



Recently completed
HLEM geophysical
survey
(May, 2023)

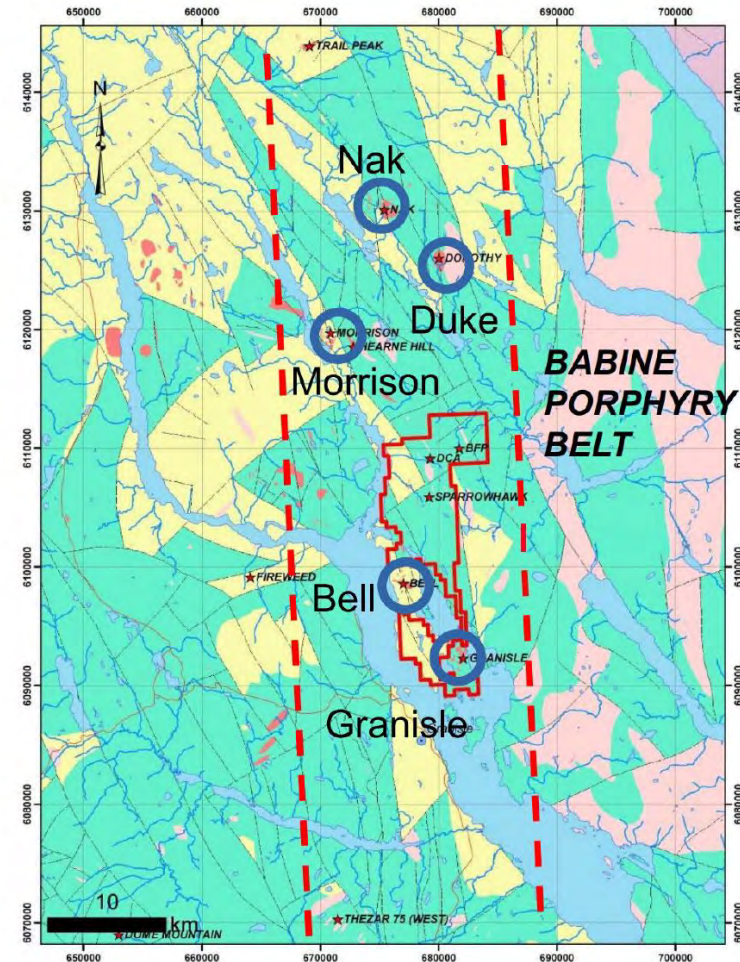
*Subject to 2% NSR



100%* Owned Babine Gold/Silver Project B.C.

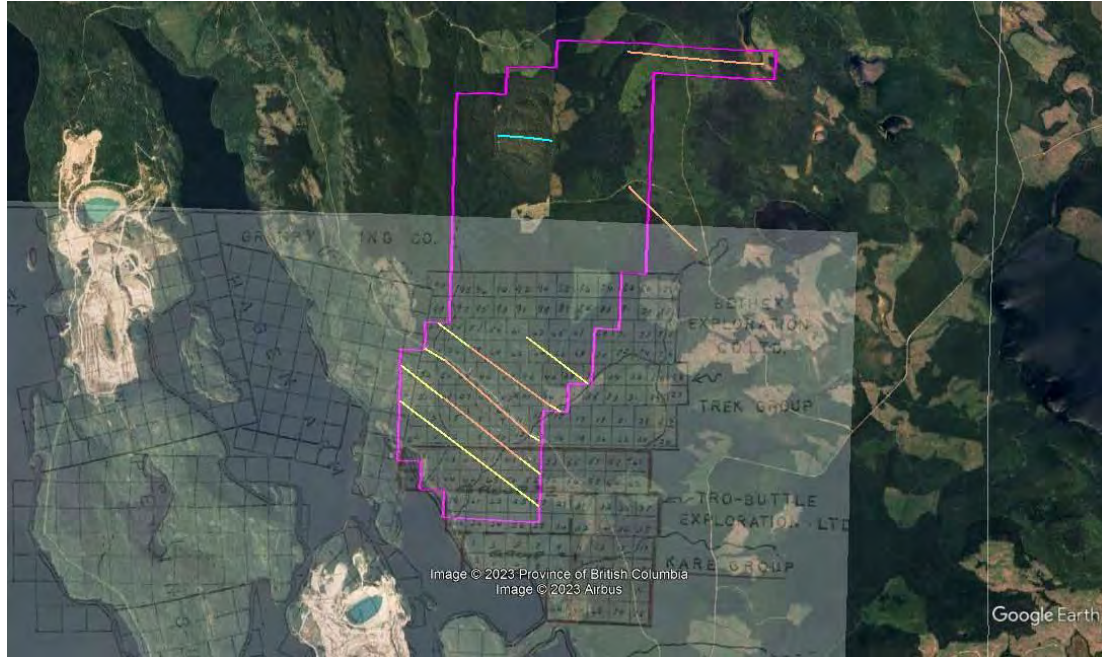
- Property is directly adjacent to two mines and surrounded by staked ground with active drilling and exploration.
- Drift (deep) covered area northeast of Granisle deposit. Option to earn 100%.
- Historical exploration includes: geochemistry, geophysics and drilling.
- Historical work focused on EM and IP target, where drilling encountered semi-massive pyrite, chalcopyrite within sedimentary rocks.
- PPM has had detailed airborne mag inverted indicating possible intrusions at depth.

*Subject to 2% NSR

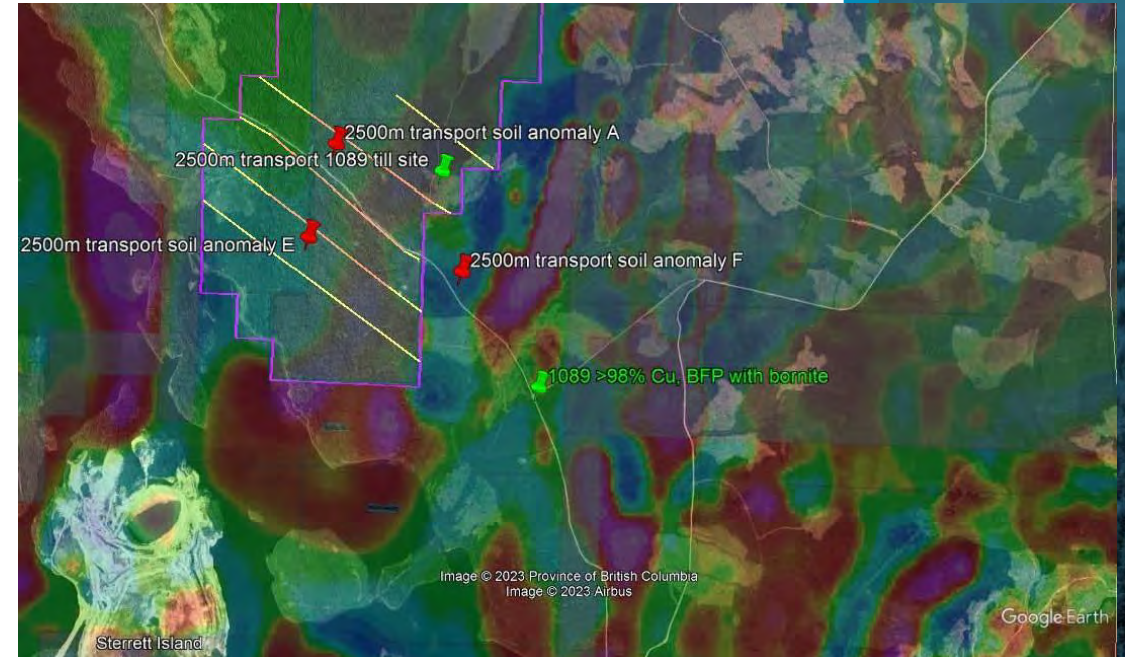


100%* Owned Babine Gold/Silver Project B.C.

Babine Property Claim Map



Babine: Inversion of magnetic airborne data indicates possible intrusions at depth below mineralization.



*Subject to 2% NSR

Why This Team Creates Value

Pacific Imperial Mines combines discovery expertise, mine development experience, and executive-level capital markets leadership — a rare combination in junior exploration.

Chris McLeod M.Eng., CHAIRMAN & CEO

Operational Scale & Strategic Execution

- 30+ years of global leadership in the energy and resource sectors
- Former CEO with M&A and integration experience (Schlumberger / Borets)
- Ability to scale technical organizations across jurisdictions
- Focused on disciplined capital deployment and operational execution

Institutional relevance: Experience managing capital-intensive operations and cross-border execution.

Licurgo Albuquerque, PRESIDENT

Corporate Strategy, Capital Formation & Strategic Partnerships

- Leads institutional investor engagement and capital structuring initiatives
- Extensive experience negotiating joint ventures, strategic alliances, and asset transactions
- Integrates technical opportunity with capital markets strategy and monetization pathways
- Drives corporate growth through disciplined partnership development

Institutional relevance: Adds transaction depth and strategic flexibility, reducing execution risk and enhancing monetization pathways.

Bill Mracek, BSc. Eng. DIRECTOR

Mine Development & Operational Risk Management

- Former VP Mining – Copper Mountain
- Former GM – Huckleberry Mines
- Startup and brownfield expansion experience
- Operational cost discipline from exploration through production

Technical Advisors

Roman Shklanka, Ph.D.
Geologist, Mine Finder.

Leo King, P.Geo., P. Eng.,
Mining Geology

Peter Holbek M.Sc. P.Geo, DIRECTOR

Discovery & Resource Advancement

- 45+ years of exploration leadership
- Led reserve definition and growth at Copper Mountain
- AME Scholz Medal recipient
- Experience advancing deposits toward production

Richard Joyes, B.Sc.
Exploration Geology, Resource Estimation

Kelly McLeod, B.ASc., P.Eng.,
Process Engineer, Metallurgy

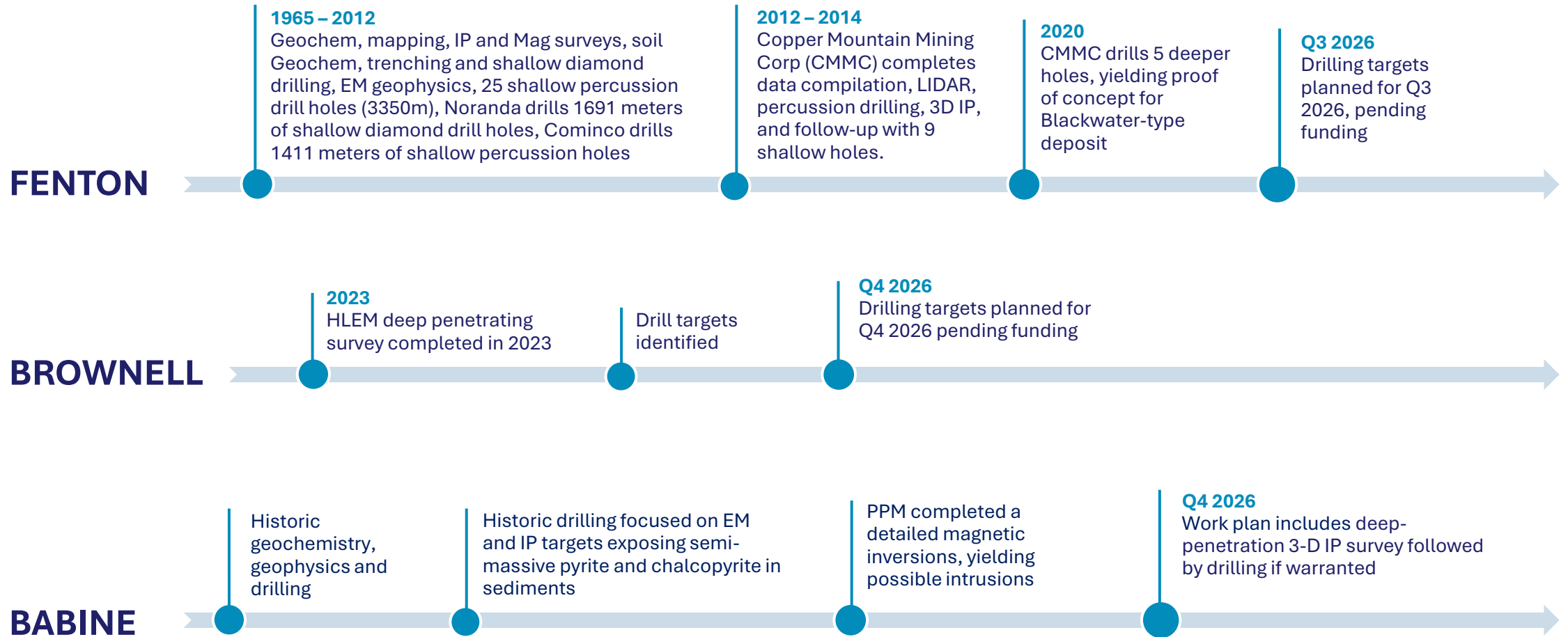
Capital Structure

Directors, CEO & President are remunerated only through share appreciation and are fully aligned with shareholders' interests. The majority of funds raised go directly into project exploration

| | | |
|---|---|---|
| CURRENT SHARES ISSUED 82,760,374 | CURRENT SHARE PRICE \$0.04 | MARKET CAPITALIZATION ~\$3.3 million |
| 1 YEAR TRADING RANGE \$0.005 - \$0.065 | AVG. DAILY TRADING VOLUME (previous month) ~275,000 | MGT/ADVISORS SHAREHOLDING ~21% |



Exploration Plan & Timetable



Investment Highlights

Pacific Imperial Mines is a low-cost opportunity to participate in leverage associated with discovery of a potential world class gold or copper deposit.



Three expertly selected gold-silver or base metal projects with significant size and depth potential and multiple targets in belts of world-class deposits.



Mining friendly, politically stable jurisdictions; road accessible, near infrastructure and workforce.



Highly experienced, knowledgeable and successful exploration team with significant insider ownership.



Drill targets identified – any drilling success should trigger share price revaluation.



Projects are 100% owned or have straightforward agreements to acquire 100% interest.



Clear strategy to determine size and economic potential of any discovery.



**PACIFIC IMPERIAL
MINES INC.**

TSXV: PPM

Thank You.

CONTACT

Chris McLeod, M.Eng., Chairman and CEO

Email: info@pacificimperialmines.com

Telephone: 604 -737-2303

pacificimperialmines.com

HEAD OFFICE

Suite 400 – 1681 Chestnut Street

Vancouver, BC V6J 4M6



March 2026